



FRIENDS OF WOMPATUCK

6 Month Report for January to June 2018

by Vicki Schow, President and Doug Luoma, Treasurer

During the first 6 months of 2018, the Friends of Wompatuck has been busy partnering with DCR to maintain and improve Wompatuck. This winter's winds left a lot of trees and debris on many of the trails. Thank you to everyone who helped clear the trails and get them back into shape.

Unfortunately, our 3rd annual Snowpatuck, scheduled for February, was canceled due to wet trail conditions. This is always a great winter celebration of winter activities enjoyed in Wompatuck, like fat biking, snow shoeing, and cross-country skiing. Stay tuned for info about the 2019 Snowpatuck.

So far, in 2018, we have hosted four formal trail care days. One of these work days included the construction of a new bridge by Scout Area 3. However, throughout the year, many of the Friends are working in the park informally to help keep our trails in excellent condition with clipping, mowing, and wet trail management. This widespread volunteer work is critical in helping keep the trails in good condition.



New bridge



New bike repair stand

This spring the Friends of Wompatuck purchased a bicycle repair stand and in June DCR staff installed it near the Visitor Center. It includes a variety of tools securely attached by retractable braided stainless steel cables and a bicycle pump, so park users can inflate tires and make repairs to their bikes in the parking lot.

The pump track, installed in July 2017, gets a lot of use from a variety of park users and has been a great success. It is particularly

popular with kids. The Friends of Wompatuck continues to maintain it as required.

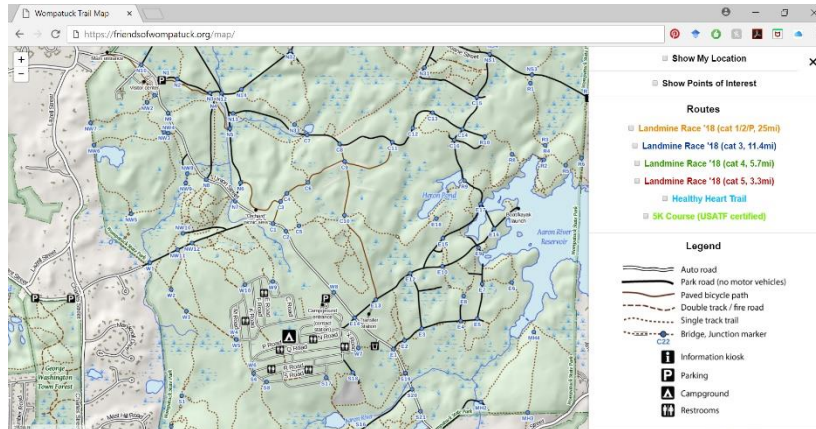
The Wompy Warriors, our New England High School Cycling Association (NEHSCA) team, saw significant growth in its second season. This spring we had 36 kids on the mountain bike team ranging from 5th to 12th grade. The team had a couple practices a week in Wompatuck



Wompy Warriors

led by ten coaches and then competed in six races around New England, including one at Wompatuck. The second season for this team wrapped up in June.

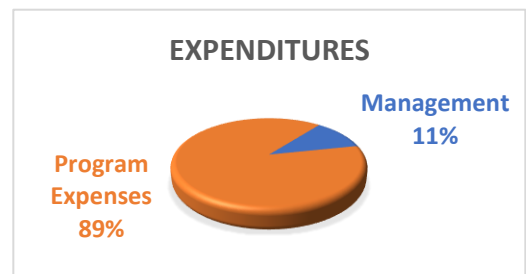
In June, the Friends of Wompatuck and SE Mass NEMBA once again partnered with the Kids PMC Ride by taking leadership on the mountain bike loop option. We mark the loop and then lead group rides of kids. This is a great way to introduce local kids to Wompatuck's trails.



The Wompatuck park map continues to be produced and purchased by the Friends of Wompatuck. This spring we purchased 20,000 more maps to be ready for the summer rush. The online interactive map is also a well appreciated tool, particularly with the "Show My Location" feature helping park users confidently

explore new-to-them parts of the park. The interactive map has also allowed us to more accurately report the locations of deadfalls to DCR. You can find the interactive map at <https://friendsofwompatuck.org/map/>.

As of June 2018, our membership count has grown to 200 households and our annual drive has yielded over \$4,000 in new donations. In terms of disbursements, 89% of it was used for programming or items directly related to the mission of the Friends of Wompatuck, like the new bike stand, trail work, maps, and the Wompy Warriors. The other 11% of our disbursements



went to cover management, insurance, and fundraising expenses. Since we have already paid most of these annual overhead expenses for 2018, the ratio of monies spent directly to further the mission of Friends of Wompatuck should only improve as we complete the second half of 2018. We currently have over \$21,000 in our bank account.

Our largest annual fundraiser, the Landmine Classic Mountain Bike Race, will be held on September 9th. This event showcases many of Wompatuck's trails and all proceeds from the race go back into maintaining and improving the park. If you would like to volunteer at this year's Landmine Classic, please contact us at landmineclassic@gmail.com. If you are interested in racing the Landmine Classic, visit <http://landminemtb.com/> for more information.

The Friends of Wompatuck is an all-volunteer organization comprised of a variety of park users. We value your participation and feedback. We meet the third Monday of every month at the Wompatuck Visitors Center. Please join us!